

## 2005 Snapshot: Washington's Community Health Center System

22 CHCs - Over 130 Service Delivery Sites

585,520 Total Patients

2,254,964 Total Visits

Washington's community health centers (CHCs) are local, non-profit, community-owned health care providers serving low-income and medically underserved communities. In 2005, CHCs were the medical home for 585,520 individuals:

- Forty percent of patients were on Medicaid (40%)
- Over one-third more were uninsured (35%)
- Patients included 88,274 migrant or seasonal workers and 31,619 homeless individuals

Community health centers form a statewide network of providers where information, ideas, and best practices are exchanged. In this way, CHCs leverage their resources to expand health care access to more patients, creating Washington's largest primary care safety net.

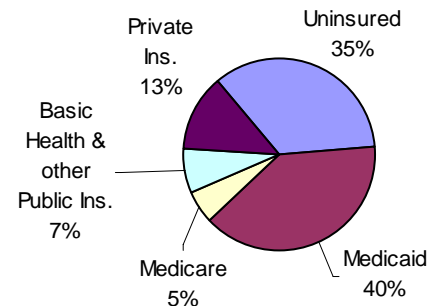
**Essential** – Washington's health centers provide *access* to all patients that walk through the door, regardless of their ability to pay. The statewide network of CHCs:

- Serves for the rising number of uninsured in Washington – uninsured patient visits at health centers increased by 42% between 2000 and 2005.
- Provides a medical home for one-third of the state's uninsured, including about half of the state's uninsured children.
- Reduces health care disparities. The majority of patients (67%) live at, or below, the federal poverty level and over half of patients are people of color.

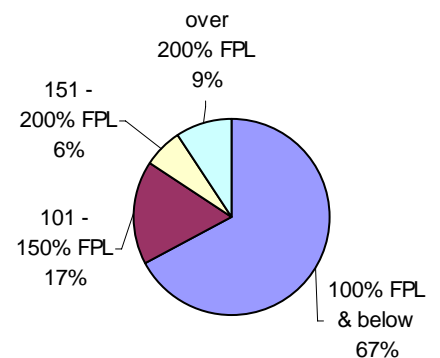
**Experienced** – Washington health centers have over 30 years of experience delivering quality primary care tailored to the needs of underserved populations in each community. Services include education, prevention and early intervention services that help patients lead full and productive lives. By investing in quality patient care on the front end, and encouraging a regular doctor/patient relationship, health centers head off new health problems and minimize costs. In 2005, Washington CHCs:

- Provided mental health care to over 49,402 patients during 113,162 visits.
- Increased dental capacity, with dental care visits rising 54% from 2000 to 2005.
- Improved access to care by providing culturally sensitive care in over 25 languages, transportation services, and case management.

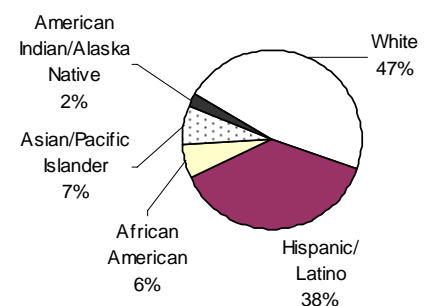
### Insurance Status



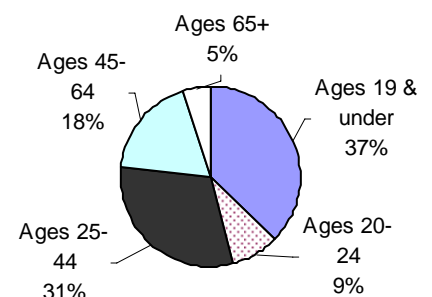
### Income



### Race/Ethnicity



### Age



**Efficient** – CHCs are part of the health care solution. In 2006, the Washington State health care system wasted \$355 million in avoidable ER visits. These non-emergent visits could have been treated more cost effectively at a CHC.

From chronic disease management to evidence-based clinical practice, CHCs deliver good health outcomes and are extremely efficient. By zeroing in on conditions that significantly drive up costs - such as asthma, diabetes, and hypertension - health centers simultaneously improve patient health and control unnecessary spending. This model reduces the need for more expensive hospital in-patient and specialty care and produces significant savings for the health care system.

### Patient & Visits by Selected Primary Diagnosis & Services

	<u>Visits</u>	<u>Patients</u>
<b>Medical Conditions</b>		
Asthma	21,708	14,085
Diabetes	75,679	26,971
Hypertension	64,403	34,431
Heart disease (selected)	15,150	6,972
Mental health & substance abuse	126,840	53,519
<b>Preventive Services</b>		
Health supervision ages 0-11 (well-child visits)	116,184	66,434
Selected immunizations	118,016	77,124
Pap smear	58,149	55,802
Mammogram	2,316	1,912
HIV Test	15,736	14,964

### Percent of WA Health Centers Providing Select Services

General Primary Medical Care	100%
Prenatal Care	84%
Preventive Dental Care	100%
Mental Health Treatment/Counseling	100%
Substance Abuse Treatment/Counseling	37%
Hearing Screening	79%
Vision Screening	95%
Pharmacy	84%

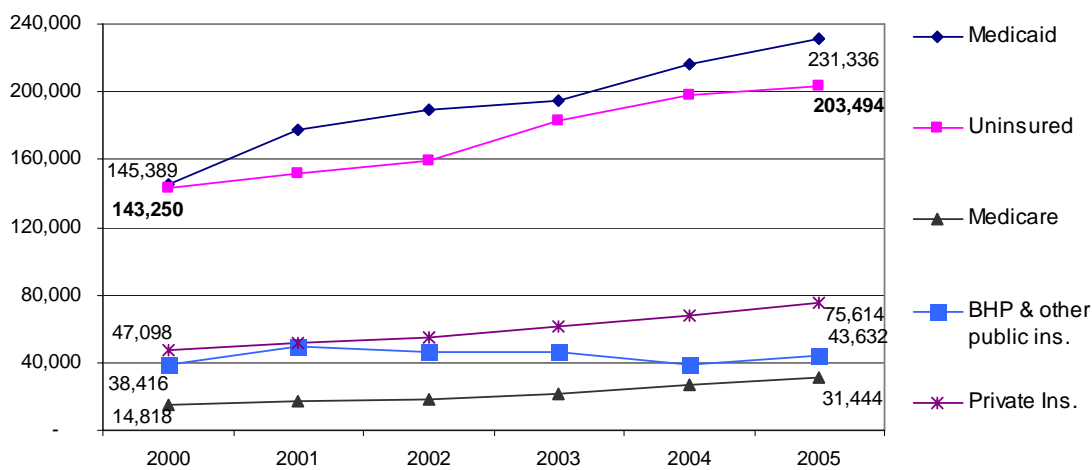
#### Preventive Services

Pap Smear	100%
Smoking Cessation	84%
HIV testing & counseling	100%
Glycosylated hemoglobin measurement, diabetes	100%
Blood pressure monitoring	100%
Blood cholesterol screening	95%
Weight reduction programs	79%

#### Wraparound Services

Outreach	95%
Case Management	95%
Eligibility Assistance	100%
Health Education	100%
Interpretation/Translation Services	100%
Transportation	74%
Outstationed Eligibility Workers	53%

### Insurance Status of Washington Community Health Center Patients, 2000-05



**Methodology:** Annual data (UDS) is collected from the community health center members of the Washington Association of Community and Migrant Health Centers (WACMHC), according to federal data reporting criteria. Due to differences among federal reporting requirements:

- *Total patient, demographic, and insurance data:* 2005 data is from all 22 WACMHC members (except income data which is from 21 members due to data constraints). 2000-04 comparison data is from the 19 members federally required to report at that time.
- *Diagnosis and service data:* from the 19 members federally required to report this data for all their patients in 2005.